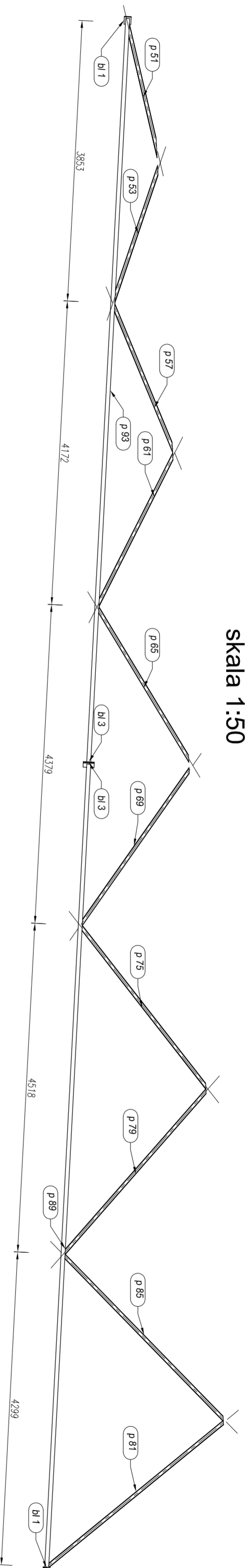
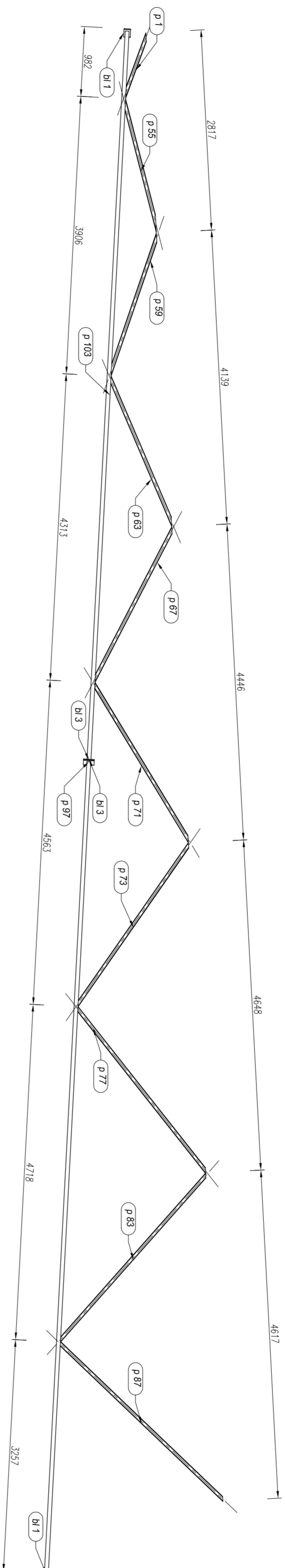


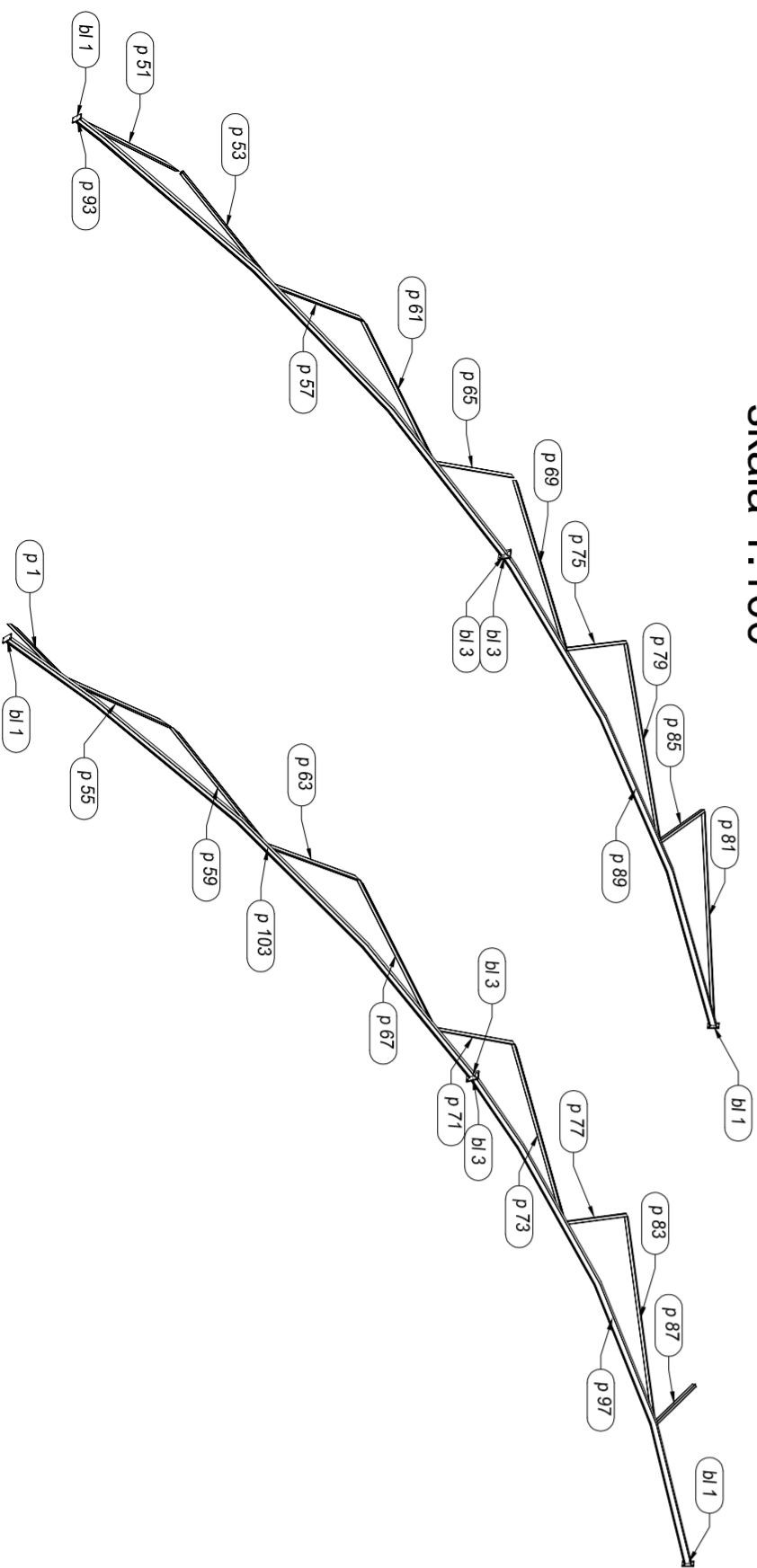
skratowanie dolne K2
widok z góry
skala 1:50



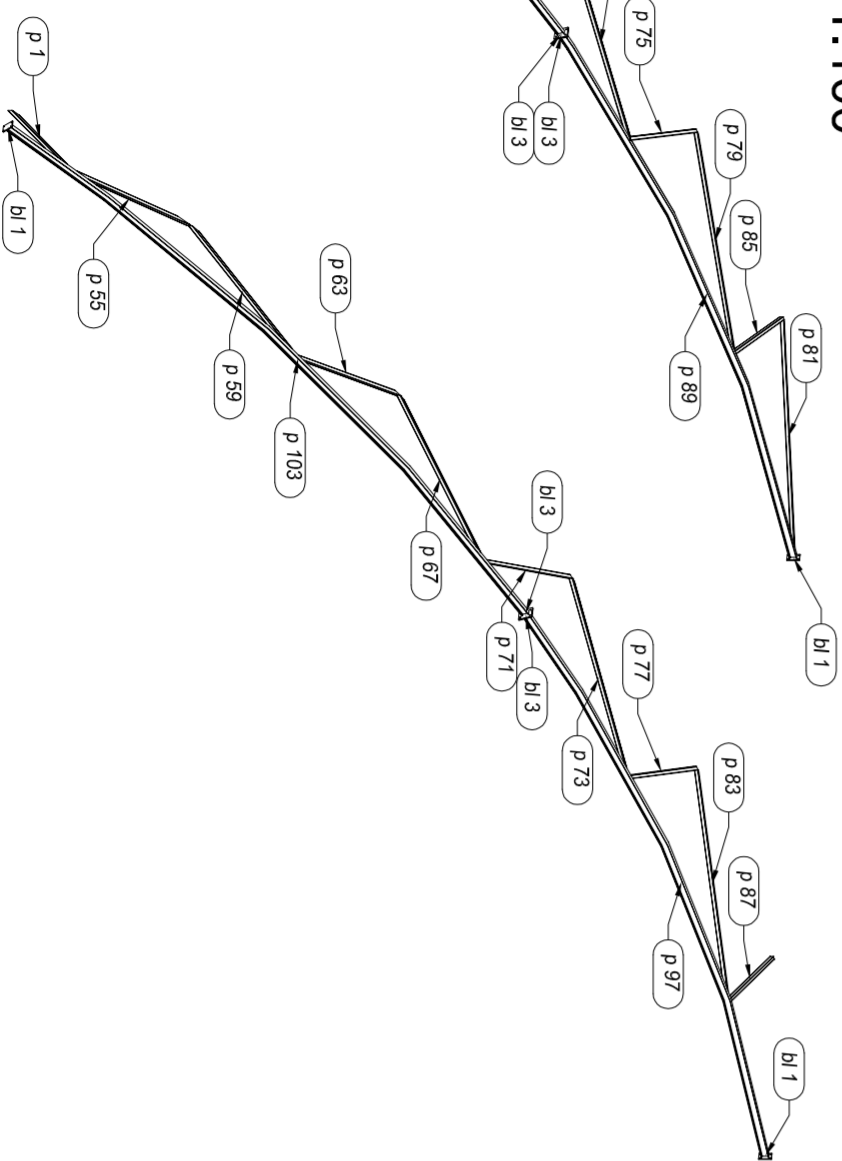
skratowanie górne K3
skala 1:50



skratowanie dolne K2
izometria
skala 1:100



skratowanie górne K3
izometria
skala 1:100



| Pozycja | Przekrój | Materiał | Liczba | Długość (mm) | Jednostkowa (kg/m) | Masa Elementu (kg) | Całkowita (kg) |
|--------------------------------|---------------|----------|--------|--------------|--------------------|--------------------|----------------|
| bl 1 | BLACHA 12x95 | STAL | 4 | 170.00 | | 1,52 | 6,09 |
| bl 3 | BLACHA 10x150 | STAL | 4 | 190.00 | | 2,24 | 8,95 |
| p 1 | RK 50x3 | STAL | 1 | 1224,03 | 4,250 | 5,20 | 5,20 |
| p 51 | RK 50x3 | STAL | 1 | 2252,51 | 4,250 | 9,57 | 9,57 |
| p 53 | RK 50x3 | STAL | 1 | 2322,94 | 4,250 | 9,87 | 9,87 |
| p 55 | RK 50x3 | STAL | 1 | 2350,26 | 4,250 | 9,99 | 9,99 |
| p 57 | RK 50x3 | STAL | 1 | 2441,96 | 4,250 | 10,38 | 10,38 |
| p 59 | RK 50x3 | STAL | 1 | 2450,90 | 4,250 | 10,42 | 10,42 |
| p 61 | RK 50x3 | STAL | 1 | 2517,93 | 4,250 | 10,70 | 10,70 |
| p 63 | RK 50x3 | STAL | 1 | 2535,63 | 4,250 | 10,78 | 10,78 |
| p 65 | RK 50x3 | STAL | 1 | 2608,01 | 4,250 | 11,08 | 11,08 |
| p 67 | RK 50x3 | STAL | 1 | 2629,65 | 4,250 | 11,18 | 11,18 |
| p 69 | RK 50x3 | STAL | 1 | 2711,45 | 4,250 | 11,52 | 11,52 |
| p 71 | RK 50x3 | STAL | 1 | 2736,80 | 4,250 | 11,63 | 11,63 |
| p 73 | RK 50x3 | STAL | 1 | 2857,05 | 4,250 | 12,14 | 12,14 |
| p 75 | RK 50x3 | STAL | 1 | 2875,19 | 4,250 | 12,22 | 12,22 |
| p 77 | RK 50x3 | STAL | 1 | 2996,67 | 4,250 | 12,74 | 12,74 |
| p 79 | RK 50x3 | STAL | 1 | 3033,09 | 4,250 | 12,89 | 12,89 |
| p 81 | RK 50x3 | STAL | 1 | 3143,82 | 4,250 | 13,36 | 13,36 |
| p 83 | RK 50x3 | STAL | 1 | 3153,93 | 4,250 | 13,40 | 13,40 |
| p 85 | RK 50x3 | STAL | 1 | 3185,72 | 4,250 | 13,54 | 13,54 |
| p 87 | RK 50x3 | STAL | 1 | 3208,46 | 4,250 | 13,64 | 13,64 |
| p 89 | IPE 100 | STAL | 1 | 11201,37 | 8,090 | 90,62 | 90,62 |
| p 93 | IPE 100 | STAL | 1 | 11472,66 | 8,090 | 92,81 | 92,81 |
| p 97 | IPE 100 | STAL | 1 | 11609,65 | 8,090 | 93,92 | 93,92 |
| p 103 | IPE 100 | STAL | 1 | 11779,11 | 8,090 | 95,29 | 95,29 |
| Masa łączna elementów (kg) | | | | | | | 613,94 |
| Dodatek na spoiny : 2.0 % (kg) | | | | | | | 12,28 |
| Masa całkowita (kg) | | | | | | | 626,22 |

| | | | |
|-------------|--------------------------------|---------------------------------------|-----------|
| INWESTOR | GMINA WYSOKA | | |
| BRANŻA | OBIEKT | SALA SPORTOWA | |
| B | ADRES | 89-320 Wysoka ul. Szkolna dz.nr 167/2 | |
| DATA | TREŚĆ | K2, K3 | NR RYS 27 |
| 12.2009r. | RYSUNKU | | |
| PROJEKTOWAŁ | OPRACOWAŁ | OPRACOWAŁ | SPRAWDZIŁ |
| | mgr inż. Wojciech Kowalewski | mgr inż. Michał Kowalewski | |
| | Specjalista w zakresie | | |
| | Nr upraw. bud.: NN-8345/585/82 | | |